

TECHNICAL SPECIFICATIONS 510 SFC TT 3305 WB, 5.49 Ton

POWERTRAIN

Engine Type 4SPCR BS6
 Displacement/ Cubic capacity 2956cc
 Maximum Power Output (in kW) 73.5 kW (100PS) @2800 r/min
 Maximum Torque (in Nm) 300 Nm @ 1200 -2200 r/min
 Clutch Single plate dry friction type- 280 mm dia
 Transmission G400, 5 Speed, Manual Synchromesh Gearbox (5F, 1R), PTOP

FUEL SYSTEM

Fuel Injection system M/s Delphi (suitable upto 2000 bar)
 Fuel tank capacity (in litres) 60 Liter

ELECTRICALS

Battery 12V, 75 ah capacity
 Alternator 120 amps

PERFORMANCE

Max. Gradeability (1st Gear) 38.00%

STEERING

Steering System Power Steering

FRAME

Frame Ladder type frame with riveted/bolted cross members (8 no)
 Long Member Dimensions 180 x 55 x 5

BRAKES

Service Brake Vaccum assisted; Hydraulic two leading slide shoe; Auto Slack Adjuster
 Parking Brake Transmission mounted parking drum brake

SUSPENSION & TYRES

Front Suspension Parabolic spring with rubber bush, 2 no Hydraulic Double acting Shock Absorbers with Anti roll bar
 Rear Suspension Semi elliptical leaf springs
 No of tyres Front 2,Rear 4 , Spare 1
 Front 7.00-16 12PR
 Rear 7.00-16 12PR

WEIGHT

Front Axle Weight -FAW (in kg) 1515
 Rear Axle Weight -RAW (in kg) 935
 Kerb Weight (in kg) 2450
 Gross vehicle weight (in kg) 5490

OVERALL DIMENSIONS

Wheel base (in mm) 3305
 Overall Length (in mm) 5405
 Overall Height (in mm) 2300
 Overall Width (in mm) 2048

LOAD BODY DIMENSIONS

Load body Length (in mm) NA
 Load body Width (in mm) NA
 Load body Height (in mm) NA
 Minimum Turning Dia (in metres) 13.1
 Minimum Ground Clearance (in mm) 189
 Seating Capacity Driver +2
 Warranty 3 years or 300000 km, Whichever is earlier*



CBC

1515
 935
 2450
 5490

FSD

1560
 1180
 2740
 5490

HDLB

1570
 1280
 2850
 5490

MAINTENANCE SCHEDULES

Service Item	Service Interval (km)	Interval (km)
Engine oil		40,000
T/M oil		120,000
Differential oil		120,000
Power steering oil		120,000
Coolant		240,000
Clutch oil		120,000
Hub grease Front		120,000
Hub grease Rear		120,000

Specifications are subject to change without prior notice. These are indicative photos, specifications for reference only.

Dealer Stamp



For more information, please visit our website: www.light-trucks.tatamotors.com
 You can also contact our Sales Office: Tata Motors Limited, 4th Floor, Ahura Centre, 82, Mahakali Caves Road, MIDC, Andheri (East), Mumbai - 400 093 or call toll-free no. 1800 209 7979.

Terms & Conditions apply as per the policy of ITGI. Insurance available on light, intermediate & heavy commercial vehicles.
 CAUTION: Accessories shown in the picture or elsewhere do not constitute standard fitment. The specifications are merely indicative. Due to continuous product improvements, these specifications are liable to change without notice.

TATA MOTORS

3-YEAR/3-LAKH KM WARRANTY

SAMPOORNA SEVA

AAPKE SAATH HAR KADAM

TATA GENUINE PARTS

TATA SURAKSHA

TATA DELIGHT

TATA PROLIFE

TATA ZIPPY

TATA KAVACH

TATA OK

TATA ALERT

TOLL-FREE 1800 209 7979

TATA MOTORS
 Connecting Aspirations



Reliable Performance Guaranteed

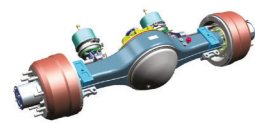
510 SFC TT Smallest Twin Tyre Truck for more Profit per KM



SFC 407 TT / 31 Range is now 510 SFC TT 33 WB in BS6



IMPROVED PRODUCT PACKAGE



Banjo Type Rear Axle
More Load carrying capacity, lesser prone to leakage



Long member thickness is increased to 5mm



Light Weight Loadbody with increased strength



Transmission / Steering oil change / Hub Greasing interval is improved from 80k kms to 120000 kms



Standard Telematics Connectivity with App for Owners and Fleet managers



SAFETY ENHANCED with more solid built quality on SFC Cabin



New 120 A alternator



Serrated Coupling flange propeller shaft for better Reliability, Maintenance & to increase Power Transmission



Music system & Blaupunkt speakers + USB fast charging



New Instrument Cluster with Tell tale Symbols and Gear shift advisor

IMPROVED DRIVERS' PACKAGE



H2LS Brakes with Brake Boosters



Reduced clutch effort by 40%



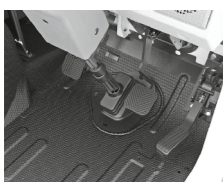
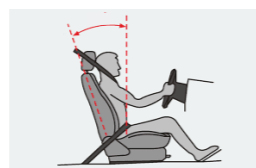
Lower Gear Shift Effort with optimized Gear Shift travel



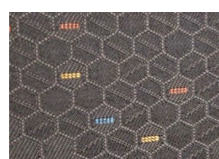
Power steering with reduced effort and new steering wheel



Seat adjustment in XZ Direction



ABC Pedals Improved Ergonomic pedal positions to reduce fatigue



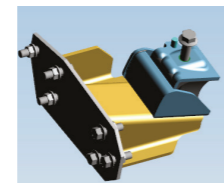
Melba Fabric for Seats for better comfort both in summer and winter



Improved New Combination switch with better reliability



Lower NVH with improved engine mount and Parabolic suspension with rubber Bush



EXPERIENCE THE TATA MOTORS ILCV 6 POWER OF 6

BS6 THE POWER OF 6



1 POWER OF GREATER PROFITS



2 POWER OF ENHANCED PERFORMANCE



3 POWER OF INCREASED DRIVING COMFORT



4 POWER OF GREATER CONVENIENCE & CONNECTIVITY



5 POWER OF GREATER VALUE



6 POWER OF IMPROVED SAFETY AND SECURITY

Driven by passion and imagination, the TATA 510 SFC TT is proudly "The Smallest Twin Tyre Truck for more Profit per KM"

Modelled in line with its predecessor, the prestigious SFC 407 TT / 31, this power packed vehicle has upped the game in terms of Improved product and driver packages, enhanced connectivity and Gradeability, lower cost of ownership, thus making it the most desired LCV in India.

In addition, Tata Motors is the ONLY manufacturer in India selling the SFC Styled Cabins with the 'Unique NOSE' for highest levels of safety.



Larger Loading area

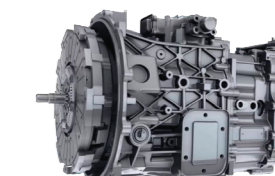


Lower TCD



38%

Best-in-Class Gradeability

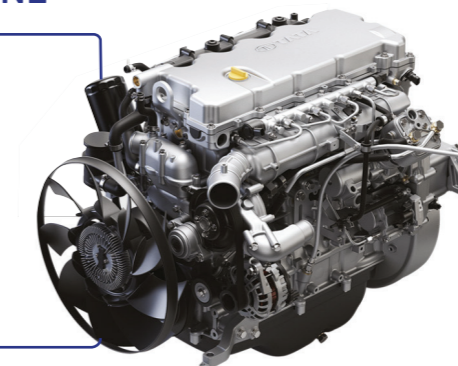


Improved G400 gearbox with PTO Provision

MOST FUEL EFFICIENT TATA 4SPCR BS6 ENGINE

The DNA of BS4 Engine is carried to the BS6 Engine so that the same reliability and Mileage Superiority is achieved

- ▶ Max Torque improvement to 300 Nm (20% more)
- ▶ Low End torque Increased to 290 Nm (26 % increase)
- ▶ Flat Torque for lesser Gear shifting & better fuel efficiency
- ▶ BS6 compliant



TRIED, TESTED & TRUSTED

- Reliable 4SP engine
- Heavy duty aggregates
- Most cost efficient in its class
- Largest customer base
- High horsepower and torque
- Lowest spare parts cost
- Highest resale value

ALL-SEASON MANY APPLICATIONS



Poultry



Poultry Feed



Food Grain Bags



Water Tanker



Parcel and Courier



FMCG

*Images used are representative purpose only
*Technical specs are subjected to be changed & are applicable under standard test conditions

*Images used are representative purpose only
*Technical specs are subjected to be changed & are applicable under standard test conditions