

**TECHNICAL SPECIFICATIONS 710 SFC 3305 WB, 7.49 Ton**

**POWERTRAIN**

Engine Type 4SPCR BS6  
 Displacement/ Cubic capacity 2956cc  
 Maximum Power Output (in kW) 73.5 kW ( 100PS ) @2800 r/min  
 Maximum Torque (in Nm) 300 Nm @ 1200 -2200 r/min  
 Clutch Single plate dry friction type- 280 mm dia  
 Transmission G550, 5 Speed, Manual Synchromesh Gearbox (5F, 1R), PTO

**FUEL SYSTEM**

Fuel Injection system M/s Delphi (suitable upto 2000 bar)  
 Fuel tank capacity (in litres) 120 Liter

**ELECTRICALS**

Battery 12V, 100 ah capacity  
 Alternator 120 amps

**PERFORMANCE**

Max. Gradeability (1st Gear) 33.00%

**STEERING**

Steering System Power Steering

**FRAME**

Frame Ladder type frame with riveted/bolted cross members (7 no)

Long Member Dimensions 200 x 60 x 5

**BRAKES**

Service Brake Air Brakes with auto Slack Adjustor  
 Parking Brake Graduated valve controlled spring brake chamber integral with rear brake

**SUSPENSION & TYRES**

Front Suspension Semi elliptical leaf springs, 2 no Hydraulic Double acting Shock Absorbers

Rear Suspension Semi elliptical leaf springs

No of tyres Front 2,Rear 4 , Spare 1

Front Opt 1: 7.50-16, 16 PR

Rear Opt 1: 7.50-16, 16 PR

**WEIGHT**

Front Axle Weight -FAW (in kg) 1560  
 Rear Axle Weight -RAW (in kg) 1080  
 Kerb Weight (in kg) 2640  
 Gross vehicle weight (in kg) 7490

**OVERALL DIMENSIONS**

Wheel base (in mm) 3800  
 Overall Length (in mm) 6079  
 Overall Height (in mm) 2290  
 Overall Width (in mm) 2086

**LOAD BODY DIMENSIONS**

Load body Length (in mm ) NA  
 Load body Width (in mm ) NA  
 Load body Height (in mm ) NA  
 Minimum Turning Dia (in metres ) 15  
 Minimum Ground Clearance (in mm ) 213  
 Seating Capacity Driver +2  
 Warranty 3 years or 300000 km, Whichever is earlier\*

MAINTENANCE SCHEDULES		ENGINE 4SPCR
Engine oil	Service Interval (km)	40,000
T/M oil		120,000
Differential oil		120,000
Power steering oil		120,000
Coolant		240,000
Clutch oil		120,000
Hub grease Front		120,000
Hub grease Rear		120,000

Specifications are subject to change without prior notice. These are indicative photos, specifications for reference only.



**CBC FSD HDLB**

Front Axle Weight -FAW (in kg) 1560 1625 1635  
 Rear Axle Weight -RAW (in kg) 1080 1555 1595  
 Kerb Weight (in kg) 2640 3180 3230  
 Gross vehicle weight (in kg) 7490 7490 7490

Wheel base (in mm) 3800 3800 3800  
 Overall Length (in mm) 6079 6105 6105  
 Overall Height (in mm) 2290 2290 2850  
 Overall Width (in mm) 2086 2255 2255

Load body Length (in mm ) NA 3790 3790  
 Load body Width (in mm ) NA 2117 2117  
 Load body Height (in mm ) NA 1825 1825  
 Minimum Turning Dia (in metres ) 15 15 15  
 Minimum Ground Clearance (in mm ) 213 213 213  
 Seating Capacity Driver +2 Driver +2 Driver +2  
 Warranty 3 years or 300000 km, Whichever is earlier\*



For more information, please visit our website: [www.light-trucks.tatamotors.com](http://www.light-trucks.tatamotors.com)  
 You can also contact our Sales Office: Tata Motors Limited, 4th Floor, Ahura Centre, 82, Mahakali Caves Road, MIDC, Andheri (East), Mumbai - 400 093 or call toll-free no. 1800 209 7979.

Terms & Conditions apply as per the policy of ITGI. Insurance available on light, intermediate & heavy commercial vehicles.  
 CAUTION: Accessories shown in the picture or elsewhere do not constitute standard fitment. The specifications are merely indicative.  
 Due to continuous product improvements, these specifications are liable to change without notice.

**TATA MOTORS SAMPOORNA SEVA**

3-YEAR/3-LAKH KM WARRANTY  
 TATA NEW GENERATION TELEMATICS  
 TATA DELIGHT  
 TATA ZIPPY  
 TATA OK

TATA GENUINE PARTS  
 TATA SURAKSHA  
 TATA PROLIFE  
 TATA KAVACH  
 TATA ALERT

TOLL-FREE 1800 209 7979

**TATA MOTORS**  
 Connecting Aspirations



**MOST RELIABLE PERFORMANCE MACHINE NOW READY TO DELIVER MORE PROFITS**

**710 SFC**

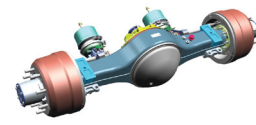


**SFC 709 is now 710 SFC BS6**





## IMPROVED PRODUCT PACKAGE



**Banjo Type Rear Axle**  
More Load carrying capacity, lesser prone to leakage



Long member thickness is increased to 5mm



Light Weight Loadbody with increased strength



Transmission / Steering oil change / Hub Greasing interval is improved from 80k kms to 120000 kms



Standard Telematics Connectivity with App for Owners and Fleet managers



Safety Enhanced with more solid build quality on SFC Cabin



New 120 A alternator



Serrated Coupling flange propeller shaft for better Reliability, Maintenance & to increase Power Transmission

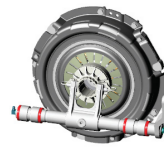


Music system & Blaupunkt speakers + USB fast charging



New Instrument Cluster with Tell tale Symbols and Gear shift advisor

## IMPROVED DRIVERS' PACKAGE



AIR BRAKE with auto wear adjusters



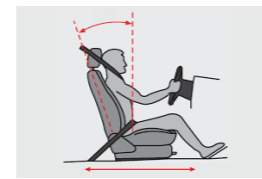
Reduced clutch effort by 40%



Lower Gear Shift Effort with optimized Gear Shift travel



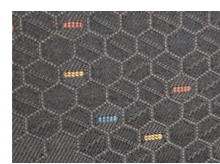
Power steering with reduced effort and new steering wheel



Seat adjustment in XZ Direction



ABC Pedals Improved Ergonomic pedal positions to reduce fatigue



Melba Fabric for Seats for better comfort both in summer and winter



Improved New Combination switch with better reliability



Lower NVH with improved engine mount & increased thickness of Leaf springs with Hydraulic Double acting Shock Absorbers



## EXPERIENCE THE POWER OF 6

BS6 THE POWER OF 6



POWER OF GREATER PROFITS



POWER OF ENHANCED PERFORMANCE



POWER OF INCREASED DRIVING COMFORT



POWER OF GREATER CONVENIENCE & CONNECTIVITY



POWER OF GREATER VALUE



POWER OF IMPROVED SAFETY AND SECURITY

News is out that "The most reliable performance machine is now ready to deliver more profits." From 1986, when India's 1st SFC was launched, grown into the SFC 709 to the present day TATA 710 SFC, the truck has come a long way. And with every evolution of our dearest truck, the Trust for the 710, within the hearts of all its proud Owners has also grown multi-fold.

Modelled in line with its predecessor, the SFC 709, this power packed vehicle has upped the game in terms of Improved product and driver packages, enhanced connectivity & Gradeability, lower cost of ownership. In addition, Tata Motors is the ONLY manufacturer in India selling the SFC styled Cabins with the unique 'NOSE' for highest levels of safety.



Largest Loading Area

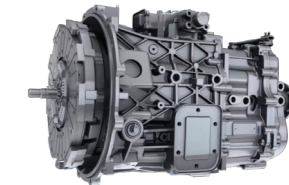


Lowest TCD



33%

Optimum Gradeability of 33%



Improved G550 gearbox with PTO Provision

## MOST FUEL EFFICIENT TATA 4SPCR BS6 ENGINE

- The DNA of BS4 Engine is carried to the BS6 Engine so that the same reliability and Mileage Superiority is achieved
- Max Torque improvement to 300 Nm (20% more)
- Low End torque Increased to 290 Nm (26 % increase)
- Flat Torque for lesser Gear shifting & better fuel efficiency
- BS6 compliant



## TRIED, TESTED & TRUSTED

- Reliable 4SP engine
- Heavy duty aggregates
- Most cost efficient in its class
- Largest customer base
- High horsepower and torque
- Lowest spare parts cost
- Highest resale value

## ALL- SEASON MANY APPLICATIONS



Laterite



Sand



Bricks



Heavy Duty



Gravels



Cement



Water Tanker

\*Images used are representative purpose only  
\*Technical specs are subjected to be changed & are applicable under standard test conditions

\*Images used are representative purpose only  
\*Technical specs are subjected to be changed & are applicable under standard test conditions