

TECHNICAL SPECIFICATIONS 610 SFC 3305 WB, 5.95 Ton

POWERTRAIN

Engine Type	4SPCR BS6
Displacement/ Cubic capacity	2956cc
Maximum Power Output (in kW)	73.5 kW (100PS)@2800 r/min
Maximum Torque (in Nm)	300 Nm @ 1200 -2200 r/min
Clutch	Single plate dry friction type- 280 mm dia
Transmission	G400, 5 Speed Manual Synchromesh Gearbox (5F, 1R), PTOP

FUEL SYSTEM

Fuel Injection system	M/s Delphi (suitable upto 2000 bar)
Fuel tank capacity (in litres)	60 Liter

ELECTRICALS

Battery	12V, 75 ah capacity
Alternator	120 amps

PERFORMANCE

Max. Gradeability (1st Gear)	30.00%
------------------------------	--------

STEERING

Steering System	Power Steering
-----------------	----------------

FRAME

Frame	Ladder type frame with riveted/bolted cross members (6 no)
Long Member Dimensions	180 x 55 x 5

BRAKES

Service Brake	Vaccum assisted; Hydraulic two leading slide shoe; Auto Slack Adjuster
Parking Brake	Transmission mounted parking drum brake

SUSPENSION & TYRES

Front Suspension	Parabolic spring with rubber bush, 2 no Hydraulic Double acting Shock Absorbers with Antiroll bar
Rear Suspension	Semi elliptical leaf spring, 2 no Hydraulic Double acting Shock Absorbers
No of tyres	Front 2,Rear 2 , Spare 1
Front	8.25-16 16PR
Rear	8.25-16 16PR

WEIGHT

Front Axle Weight -FAW (in kg)	1555
Rear Axle Weight -RAW (in kg)	825
Kerb Weight (in kg)	2380
Gross vehicle weight (in kg)	5950

OVERALL DIMENSIONS

Wheel base (in mm)	3305	3305	3305
Overall Length (in mm)	5405	5415	5415
Overall Height (in mm)	2300	2300	2850
Overall Width (in mm)	1905	2100	2100

LOAD BODY DIMENSIONS

Load body Length (in mm)	NA	3070	3070
Load body Width (in mm)	NA	2000	1965
Load body Height (in mm)	NA	450	1835
Minimum Turning Dia (in metres)	13.1	13.1	13.1
Minimum Ground Clearance (in mm)	249	249	249
Seating Capacity	Driver +2	Driver +2	Driver +2
Warranty	3 years or 300000 km, Whichever is earlier*		

MAINTENANCE SCHEDULES

	Service Interval (km)	
Engine oil		40,000
T/M oil		120,000
Differential oil		120,000
Power steering oil		120,000
Coolant		240,000
Clutch oil		120,000
Hub grease Front		120,000
Hub grease Rear		120,000

Specifications are subject to change without prior notice. These are indicative photos, specifications for reference only.

Dealer Stamp



For more information, please visit our website: www.light-trucks.tatamotors.com
 You can also contact our Sales Office: Tata Motors Limited, 4th Floor, Ahura Centre, 82, Mahakali Caves Road, MIDC, Andheri (East), Mumbai - 400 093 or call toll-free no. **1800 209 7979**.

Terms & Conditions apply as per the policy of ITGI. Insurance available on light, intermediate & heavy commercial vehicles.
 CAUTION: Accessories shown in the picture or elsewhere do not constitute standard fitment. The specifications are merely indicative. Due to continuous product improvements, these specifications are liable to change without notice.

TATA MOTORS SAMPOORNA SEVA

3-YEAR/3-LAKH KM WARRANTY

TATA NEW GENERATION TELEMATICS

TATA DELIGHT

TATA ZIPPY

TATA OK

AAPKE SAATH HAR KADAM

TATA GENUINE PARTS

TATA SURAKSHA

TATA PROLIFE

TATA KAVACH

TATA ALERT

TOLL-FREE **1800 209 7979**

TATA MOTORS
Connecting Aspirations



Make the most of your business

610 SFC The Legend of SFC as "the Best value for money LCV Truck" continues into **BS6**



SFC 407 EX/ EX2 33WB Range is now **610 SFC BS6**



H2LS BRAKES

DRIVER'S SAFETY

POWER STEERING

FUEL-EFFICIENT ENGINE

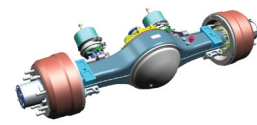
3-YEAR/3 LAKH KM* WARRANTY

IN-BUILT MUSIC SYSTEM

MOBILE CHARGING SOCKET

HEAT-RESISTANT FEATURES

IMPROVED PRODUCT PACKAGE



Banjo Type Rear Axle
More Load carrying capacity,
lesser prone to leakage



Long member thickness is
increased to 5mm



Light Weight Loadbody
with increased strength



Transmission / Steering oil change /
Hub Greasing interval is improved
from 80k kms to 120000 kms



Standard Telematics Connectivity with
App for Owners and Fleet managers



SAFETY ENHANCED with more
solid built quality on SFC Cabin



New 120 Aalternator



Serrated Coupling flange propeller shaft
for better Reliability, Maintenance & to
increase Power Transmission



Music system & Blaupunkt speakers
+ USB fast charging

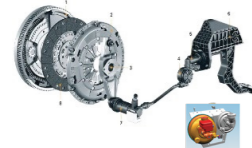


New Instrument Cluster
with Tell tale Symbols
and Gear shift advisor

IMPROVED DRIVERS' PACKAGE



H2LS Brakes with
Brake Boosters



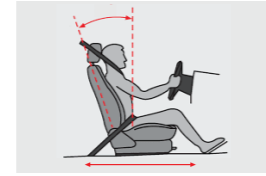
Reduced clutch effort
by 40%



Lower Gear Shift Effort with
optimized Gear Shift travel



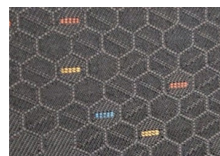
Power steering with reduced effort
and new steering wheel



Seat adjustment in XZ Direction



ABC Pedals
Improved Ergonomic pedal
positions to reduce fatigue



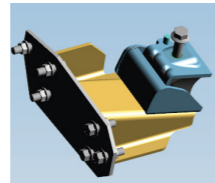
Melba Fabric for Seats for
better comfort both in
summer and winter



Improved New Combination
switch with better reliability



Lower NVH with improved engine mount and Parabolic
suspension with rubber Bush



EXPERIENCE THE



EXPERIENCE THE POWER OF CHANGE



THE POWER OF 6



POWER OF
GREATER PROFITS



POWER OF ENHANCED
PERFORMANCE



POWER OF INCREASED
DRIVING COMFORT



POWER OF GREATER
CONVENIENCE &
CONNECTIVITY

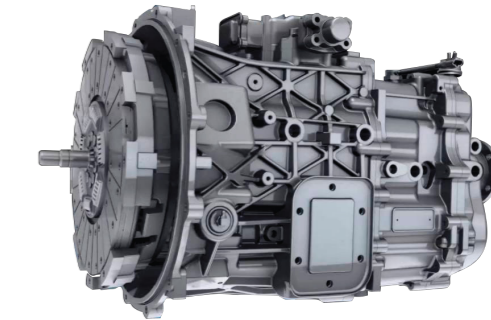


POWER OF
GREATER VALUE



POWER OF IMPROVED
SAFETY AND SECURITY

The legend of Prestigious SFC 407 EX/ EX2 33 WB returns in an all new avatar as The TATA 610 SFC Taking pride as the truck with "The Best value for money LCV Truck", the 610 SFC has much to offer with it's Improved product and driver packages, enhanced connectivity & Gradeability, lower cost of ownership, thus making it the most desired LCV in India. In addition, Tata Motors is the ONLY manufacturer in India selling the SFC Styled Cabins with the 'Unique NOSE' for highest levels of safety.



Improved G400 gearbox with PTO Provision

MOST FUEL EFFICIENT TATA 4SPCR BS6 ENGINE

- ▶ The DNA of BS4 Engine is carried to the BS6 Engine so that the same reliability and Mileage Superiority is achieved
- ▶ Max Torque improvement to 300 Nm (20% more)
- ▶ Low End torque Increased to 290 Nm (26 % increase)
- ▶ Flat Torque for lesser Gear shifting & better fuel efficiency
- ▶ BS6 compliant



TRIED, TESTED & TRUSTED

- Reliable 4SP engine
- Heavy duty aggregates
- Most cost efficient in its class
- Largest customer base
- High horsepower and torque
- Lowest spare parts cost
- Highest resale value

ALL-SEASON MANY APPLICATIONS



Fruits & Vegetables



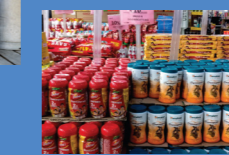
Gas Cylinders



Cold Drinks



Milk Cans



FMCG



Grains



Dairy Products



White Goods



E-commerce

*Images used are representative purpose only
*Technical specs are subjected to be changed & are applicable under standard test conditions

*Images used are representative purpose only
*Technical specs are subjected to be changed & are applicable under standard test conditions