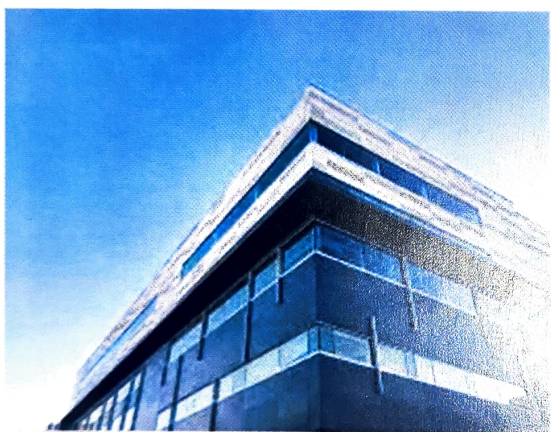


ABOUT US

THE COMPANY

PG MAXX's legacy of over 2 decades developing and supplying motorcycle helmets for the global market give us a pedigree of trust for our recent foray into Industrial Personal Protective Equipment. At **PG MAXX**, we care for each of your unique protection requirements, and we strive to be the one-stop go-to manufacturer for all specialized industrial safety requirements. Our end-to-end knowledge base and associate manufacturing set-up consists of an in-house designing & technical team for Complex Dies & Moulds, and a capability to process over 6000 Tons of plastic per annum in our associate Injection Moulding factory.



MANAGEMENT'S MESSAGE

Our management team has a rich history of working with demanding and esteemed clients such as DRDO (Ministry of Defence), Studs, Tata Motors, Samsonite, Nilkamal, Midmark Healthcare, Blue Star, Titan and many others; giving us a leg-up in developing cutting-edge products that the industry needs. At **PG MAXX**, we believe in delivering quality products to our customers, and continuing our legacy of providing the highest standards of safety, quality, and comfort. Our entire enterprise imbibes a culture of striving to make this world a better and safer place for the current generation, and for generations to come.

INFRASTRUCTURE

Headquartered in Mumbai, with units in Mumbai, Vasal and Silvassa, **PG MAXX** has the capacity and resources for an annual production of over half a million helmets and a million gloves. In addition to this, we are also foraying into the manufacturing of a host of other Industrial PPE products ranging from Eye Wear and Garments to Protective Footwear.

The Company has a fast-growing network of Sales touch points and a warehousing hub in Vasai, just outside of Mumbai; along with a rapidly-expanding network of Dealers & Distributors across Western India. Backed by our well-equipped laboratory, our products are assessed according to the Bureau of Indian Standards (BIS - ISI) and European Standard Directives (EN - CE) Standards. Quality is beyond just a deliverable for us, it is an intent and is



*PG MAXX is a registered trademark of Raga Plast Pvt. Ltd.

Why is Head Protection Required?

Helmets, or other appropriate Head Protective devices, must be worn in case of working in dangerous environments with a threat of the following:

- Loose falling objects from above
- Risk of accidental contact with exposed beams, rods, pipes, or electrical wiring

What are the components in a Safety Helmet?

- **Shell:** The outer part of the helmet, which is most visible to others; and is the first point of protection in case of a falling threat. Must have a smooth finish, and free of any dents or cracks for optimum protection. Available in multiple colours, as required by each site hierarchy chart; and can be manufactured in HDPE or ABS depending on protection requirements.
- **Harness Cradle:** An assembly of anti-concussion tapes and plastic components, to provide optimum protection and comfort
- **Belt:** Attached to the Harness cradle and designed to fit snugly around the crown of the wearer's head. It comes in either Nape type or our unique **Easy-Lock-Lock** Ratchet type for maximum comfort and protection.
- **Sweatband:** A strip of cloth attached to the front of the helmet so as to absorb sweat build-up and prevent it from dripping on the wearer's face
- **Chinstrap:** An adjustable strap which fits just under the wearer's chin, must be tight so the helmet doesn't fall off during impact, but not too tight, so that it doesn't cause discomfort to the wearer during continuous usage over several hours.

How do you differentiate between a Quality Certified Helmet and an Uncertified & potentially unsafe helmet?

Each ISI-Approved helmet is required to be legibly and indelibly marked with the following:

- Manufacturer's name or Trademark
- Month and Year of manufacturing
- Range / Size of the helmet

How to ensure optimum protection and long-durability:

- Always store the helmet in a cool and dark place, away from High Heat and Direct sunlight. In case of prolonged exposure to direct temperature extremes or open chemicals, replace the helmet periodically.
- **DO NOT** use any harsh chemicals on the helmet shell or other components since this can degrade the material and impact its protective abilities
- Replace the helmet immediately after it has been impacted by any force, even if no damage is visually apparent. And **DO NOT** use any helmet beyond 3 years from its date of manufacturing to prevent undue degradation

Industrial Safety Helmet Test Requirements

Penetration resistance



Flammability resistance



Electrical resistance



Shock absorption resistance



HEAD PROTECTION

Executive Series Helmets

Stylish, Durable, and Comfortable Safety Helmets, designed for long-lasting use



MODEL: SH-4X

Unique & Aerodynamic

SPECIFICATION:

- Shell is made from virgin HDPE
 - ABS shell available on request
- Standard 6 Ventilation Slots (3 on each side) helps with heat & moisture dissipation
 - Non-Ventilated option available upon request
- Textile suspension with 3 bands and 8 connection points
- Weight: ~350 grams (HDPE Shell) & ~400 grams (ABS Shell)



FEATURES:

- Comes with Universal Attachment slots on the side to fix safety accessories like Earmuff, Face-Shield, etc
- Comes with either **Easy-Lock-Lock** ratchet or Pin-Type regular nape fitting
- Adjustable headband from 520mm to 600mm +/- 10mm with sterilized sweatband
- In-built gutter channel to prevent rain water dripping on neck and ears
- Easily adjustable chin-strap for extra comfort & protection



MODEL: SH-K

Smart & Aerodynamic

SPECIFICATION:

- Shell is made from virgin HDPE
 - ABS shell available on request
- Standard Non-Ventilated Design
 - Option of 8 Ventilation Slots (4 per side) available on request
- Textile suspension with 3 bands and 8 connection points
- Weight: ~350 grams (HDPE Shell) & ~400 grams (ABS Shell)



FEATURES:

- Comes with Universal Attachment slots on the side to fix safety accessories like Earmuff, Face-Shield, etc
- Comes with either **Easy-Lock-Lock** ratchet or Pin-Type regular nape fitting
- Adjustable headband from 520mm to 600mm +/- 10mm with sterilized sweatband
- In-built gutter channel to prevent rain water dripping on neck and ears
- Easily adjustable chin-strap for extra comfort and protection

MAXX Express Logo: Affix your Company Logo on our range of Safety Helmets, and strengthen your corporate branding. Minimum order quantity & step-up charges applicable.

COLORS:



USER REPLACEABLE:

- Inner Cradle
- Sweatband

CERTIFICATION:

- IS: 2925 Tested
- Certified
- Marked
- Third-Party Tested as per IS 2925

HEAD PROTECTION

Popular Series Helmets

Globally recognized and Durable design, made for use over extended periods



MODEL: SH-V

Unique design & Shape

SPECIFICATION:

- Shell is made from virgin HDPE
- Standard unventilated model as per globally-recognized design
- Single-piece plastic suspension with 6 arms and a strong central connector
- Weight: ~380 grams

FEATURES:

- Comes with Universal Attachment slots on the side to fix safety accessories like Earmuff, Face-Shield, etc
- Unique **Easy-Lock-Lock** ratchet available for increased safety and comfort
- Adjustable headband from 520mm to 600mm +/- 10mm with sterilized sweatband
- In-built gutter channel to prevent rain water dripping on neck and ears
- Easily adjustable chin-strap for extra comfort and protection



MODEL: SH-C

Unique design & Shape

SPECIFICATION:

- Shell is made from virgin HDPE
- Standard 14 Ventilation Slots (7 on each side) helps with heat & moisture dissipation
- Single-piece plastic suspension with 6 arms and a strong central connector
- Weight: ~355 grams

FEATURES:

- Unique design, with a compact shape for close-contact applications
- Unique **Easy-Lock-Lock** ratchet available for increased safety and comfort
- Adjustable headband from 520mm to 600mm +/- 10mm with sterilized sweatband
- In-built gutter channel to prevent rain water dripping on neck and ears
- Easily adjustable chin-strap for extra comfort and protection



MAXX Express Logo: Affix your Company Logo on our range of Safety Helmets, and strengthen your corporate branding. Minimum order quantity & step-up charges applicable.

COLORS:



USER REPLACEABLE:

- Inner Cradle
- Sweatband

CERTIFICATION:

- IS: 2925 Tested
- Certified
- Marked
- Third-Party Tested as per IS 2925

HEAD PROTECTION

Eco-Pru Series Helmets

Thoughtfully designed for comfort, practicality, and ease-of-use



MODEL: SH-G

Practical & Unique shape

SPECIFICATION:

- Shell is made from HDPE
- Ergonomically designed plastic suspension with 6 arms
- Weight: ~340 grams

FEATURES:

- Practical and Unique shape, provides safety and doesn't hamper productivity
- Adjustable headband from 520mm to 600mm +/- 10mm with 10mm padded sweatband
- Easily adjustable chin-strap for extra comfort and protection



MODEL: SH-E

Unique design & Shape

SPECIFICATION:

- Shell is made from HDPE
- Plastic suspension with 6 arms and a strong central connector
- Weight: ~270 grams

FEATURES:

- Unique design, with a compact shape for close contact applications
- Adjustable headband from 520mm to 600mm +/- 10mm with sterilized sweatband
- Easily adjustable chin-strap for extra comfort and protection



MAXX Express Logo: Affix your Company Logo on our range of Safety Helmets, and strengthen your corporate branding.
Minimum order quantity & step-up charges applicable.

COLORS:



USER REPLACEABLE:

- Inner Cradle
- Sweatband

CERTIFICATION:

- IS 2025 Tested
- Certified
- Marked
- Third-Party Tested as per IS 2925

HEAD PROTECTION

Helmet Accessories

Multi-functional products with quick-snap fittings and designed for ease-of-work



DETACHABLE LED HEADLAMP

SPECIFICATION:

- ⌘ Detachable from Helmet Mounting (as per ISI Standards)
- ⌘ Rechargeable battery, with personal charging cable
- ⌘ Upto 8 hours of usage on Low Power mode with fully charged battery
 - Upto 4 hours on High Power mode with fully charged battery
- ⌘ 60-degree rotatable for adjustment of light focus area

FEATURES:

- ⌘ 50W LED Light provides high power to easily work in pitch dark conditions
- ⌘ 3 Light modes: Low Power, High Power, Strobe (Flashing) Effect
- ⌘ Light-weight LED light without external wires / cables for hands-free working
- ⌘ Practical design to enhance safety and productivity during night shifts

EAR MUFF ON UNIVERSAL FITTING



SAFETY HELMET COLOUR CODE

White
For Engineers, Supervisors
Managers & Foremen



Yellow
For Labourers & Earth
Moving Operators



Red
For Fire Fighter



Blue
For Electricians,
Carpenters & Other
Technical Operators



Orange
For Welders &
Workers with High
Heat Application



Green
For Safety Officers



Voilet
For Site Visitors

Why is Eye Protection Required?

Eye injuries are amongst the easiest to occur and leave the most impact on the ability to function normally. Most of these injuries can be easily prevented if appropriate Safety Goggles are worn.

What are common causes of Eye Injuries?

Eye injuries are mostly common caused due to the following:

- **Projectile Articles:** Airborne metal/wood/plastic chips and splinters can fly into the eye, causing permanent damage
- **Dust:** Dust/Wood/Metal/Chemical particles cause irritation and can result in eye infections
- **Sprays:** Chemical sprays / splashes can cause irreparable damage to the eye
- **Light Radiation:** Infra-Red, UV, Heat, or Laser light can result in permanent loss of vision if proper protection is not utilized
- **Pathogens:** When working in infectious areas, contact with virus-infected blood should be minimized

What are the components in a Safety Goggle?

- **Impact-Resistant Lens:** This is the primary clear part of the goggle which protects your eyes from direct impact. All **PG MAXX** goggles are made from Virgin Polycarbonate of special optical-grade
- **Bridge:** The part of the goggle which rests on your nose, usually single-moulded with the lens, or occasionally attached externally
- **Arm:** The side of the goggle which rests on the ear, comes either fixed or length-adjustable, and is usually Wide-set to provide maximum protection from the sides
- **Coatings:** Most industrial safety goggles come with special coatings to prevent against either scratching or fogging. All **PG MAXX** goggles come with a special Hard Coating, which ensures long-lasting use without optical interference from scratches

How do you differentiate between a Quality Safety Goggle and A potentially unsafe goggle?

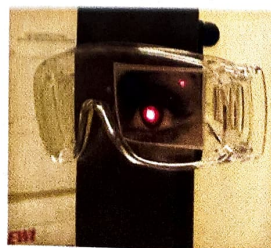
All of **PG MAXX's** safety goggles have been tested by a third-party laboratory, and goggles which come without certification pose a potential hazard to your safety. Goggles made from cheap Acrylic easily break & shatter into many tiny sharp pieces, and pose a grave threat to the wearer. And goggles made from recycled Polycarbonate are not optically clear (milky or grainy lens) and can cause migraines and headaches for the wearer when worn whilst hampering vision during working conditions.

Industrial Safety Goggle Test Requirements

Impact Resistance Test



Laser Beam & Diffuse Reflection Test



EYE PROTECTION

MODEL: PG 20 / 25

Hard-coated lens

SPECIFICATION:

- Hard-coated lens made from Virgin Polycarbonate
- Wrap-around design for superior protection
- Single-piece moulded lens to prevent lose parts



FEATURES:

- Special Anti-scratch hardcoat to prevent abrasive scratches and maintain good visibility
- Universal size for Adults
- Also available in Grey-Black Lens



MODEL: PG 40 / 45

Hard-coated lens

SPECIFICATION:

- Hard-coated lens made from Virgin Polycarbonate
- Frame-less stylish design
- Single-piece moulded lens to prevent lose parts



FEATURES:

- Coloured temple sticks allows for easy identification and visibility
- Special Anti-scratch hardcoat to prevent abrasive scratches and maintain good visibility
- Universal size for Adults
- Also available in Grey-Black Lens



COLORS:



CERTIFICATION:

- Third-Party Tested as per IS 2925

EYE PROTECTION

MODEL: PG 60 / 65

Hard-coated lens

SPECIFICATION:

- Hard-coated lens made from Virgin Polycarbonate
- Wide & wrap-around design for superior protection
- Single-piece moulded lens to prevent loose parts



FEATURES:

- Soft side-stick for superior comfort
- Special Anti-scratch hardcoat to prevent abrasive scratches and maintain good visibility
- Universal size for Adults
- Also available in Grey-Black Lens



MODEL: PG 80 / 85

Hard-coated lens

SPECIFICATION:

- Hard-coated lens made from Virgin Polycarbonate
- Smart Half-frame design
- Adjustable sliding temple for easy-adjustment and greater comfort
- Side-shield lens for enhanced peripheral visibility and protection

FEATURES:

- Coloured temple sticks allows for easy identification and visibility
- Special Anti-scratch hardcoat to prevent abrasive scratches and maintain good visibility
- Universal size for Adults
- Also available in Grey-Black Lens



COLORS:



CERTIFICATION:

- Third-Party Tested as per IS 2925

HAND PROTECTION

Cotton Knitted Gloves

Practical and Functional design for Protection and Comfort



SPECIFICATION:

- **Yarn:** Poly-Cotton yarn of various counts depending on the density
- **Knitting:** Knitted on imported 7-Gauge knitted machines
- **Cuff:** Comes with an Elasticized-cuff, and overlocked in standard Green colour
- **Density / Weight:** Available from 35 grams to 90 grams a pair

COMMON INDUSTRY APPLICATIONS:

- General Manufacturing
- Printing & Packaging
- Maintenance Services
- Engineering & Robotics
- Logistics & Warehousing
- Recycling & Sorting
- Ship Building

PACKING SIZE:

 35gm / 40gm :  600 pair per bag

 50gm / 60gm :  500 pair per bag

 70gm / 80gm :  400 pair per bag

 90gm :  300 pair per bag

CAUTION BOARDS

A-Frame Signboards

Multiple Signs :

Wet Floor



No Parking



Under Maintenance



Cleaning In Progress



Work In Progress



No Entry



CAUTION

SPECIFICATION:

- Board is made from Polypropylene in an eye-catching Bright Yellow colour
- Dimensions: 24in x 12in
- Article Weight: 700 gms



FEATURES:

- A-Shape Stand with 30degree Angle Opening for high-stability
- Upper cut-out designed for comfort in carrying
- Foldable / Collapsible design allows for Easy Storage
- Waterproof print, allowing for outdoor use even during rain
- Glossy front instantly attracts attention
- Large size makes it hard-to-miss even in crowded areas
- Available in multiple designs for all your practical needs

FEET PROTECTION



MODEL: SENATOR

SPECIFICATION:

- ⌘ Barton Combination Leather
- ⌘ Liberty Grey lining with Foam Lamination
- ⌘ 200J Imported Steel Toe-Cap
- Composite Toe-Cap available on special order
- ⌘ Single Density PU Sole
- ⌘ Aluminium (rust-free) Eyelet
- ⌘ Liberty Insock with 4mm EVA for extra padding
- ⌘ ISI 15298:2016 Part 2 Certified



MODEL: ZEUS

SPECIFICATION:

- ⌘ Grain Combination Leather
- ⌘ Liberty Grey lining with Foam Lamination
- ⌘ 200J Imported Steel Toe-Cap
- Composite Toe-Cap available on special order
- ⌘ Double Density PU Sole
- ⌘ Heavy-duty Brass Hexagon Eyelets
- ⌘ Liberty Insock with 4mm EVA for extra padding
- ⌘ ISI 15298:2016 Part 2 Certified



FEET PROTECTION

MODEL: AURUS

SPECIFICATION:

- ⌘ Suede Leather with combination front
- ⌘ Femina Grey Lining
- ⌘ 200J Imported Steel Toe-Cap
- Composite Toe-Cap available on special order
- ⌘ Single Density PU Sole
- ⌘ D-Ring style eyelets for extra comfort and safety
- ⌘ Liberty Insock with moulded EVA
- ⌘ IS 15298:2016 Part 2 Certified



MODEL: PEARL

SPECIFICATION:

- ⌘ Combination Leather, with Grain front
- ⌘ Liberty Pink lining with Foam Lamination
- ⌘ 200J Imported Steel Toe-Cap
- Composite Toe-Cap available on special order
- ⌘ Single Density PU Sole
- ⌘ Velcro-style for greater comfort and ease of wearing
- ⌘ Liberty Insock with 4mm EVA for extra padding
- ⌘ ISI 15298:2016 Part 2 Certified





: Corporate Office :

302, Samparan Complex,
New Link Road, Chakala,
Andheri (E), Mumbai - 400099

Email : sales@ragasafety.com
Mobile : +91 7433016444

Mumbai Sales

Email : sales.mum@ragasafety.com
Mobile : +91 7433016111

Gujarat Sales

Email : guj1.sales@ragasafety.com
Mobile : +91 7433016777

Pune Sales

Email : maha.sales1@ragasafety.com
Mumbai : +91 7433016555

: Factory :

Unit No.2, Plot No. 19,
Survey No. 185/1/1, Dokmardi,
Amlil, Silvassa, DNHDD- 396230

Email : sales@ragasafety.com
Mobile : +91 9225140816

Follow us on:     